

AQUASTAR®

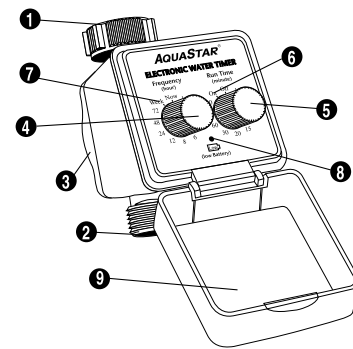
25200 Electronic Water Timer

Please read the instruction manual before attempting to use this product.

Performance specifications

1. For outdoor use
2. For water pressure less than 125 PSI
3. For use with water of temperatures no greater than 100°F or 38°C and no less than 32°F or 0°C
4. For use in places with good drainage
5. Don't place in continuous direct sunlight where high temperatures may damage mechanism.
6. Use 4 "AA" Alkaline, non-rechargeable batteries.

Controls and features



A. CONTROLS:

1. Water faucet connection
2. Hose connection
3. Battery compartment lid
4. Watering frequency control knob
5. Watering time control knob
6. Manual watering control knob- for instant watering
7. Auto close switch for single watering
8. Low battery indicator
9. Front cover

B. FEATURES:

1. Available for 11 watering frequencies from every hour to a week.

2. Available for 10 different watering durations from one minute to two hours
3. Manual watering for spontaneous watering at any time
4. Manual shut-off for spontaneous close any time
5. Available for auto close switch for single watering

Battery installation and replacement

1. Use four AA type Alkaline batteries (not included).
2. Remove battery cover, install batteries.
3. When battery power is low, the timer will close the water valve. The low battery [Low] indicator will flash.
4. Turn off water before removing battery cover and replacing batteries.
5. Settings will be lost when batteries are replaced and must be reprogrammed.



1. Do not use rechargeable batteries.
2. Secure the battery lid tightly to ensure the timer is completely waterproof.



Program watering schedule

1. Make sure batteries are installed correctly.
2. Set up watering cycle.

Rotate the watering frequency control knob ④ Set up the index arrow to the desired location of watering frequency (1.2.3.4.6.8.12.24.48.72 hour & 1 week). [If the original setup of watering frequency is on the desired location, you need to rotate the knob to the other one & adjust back to the desired location. This moving is to ensure the timer matches the current time.]

3. Set up running watering time.

Rotate the Run Time knob ⑤ to the desired watering time. [You have now completed all the settings.] When you have completed the above settings, the timer will start working. As it is up to the serup watering frequency, the timer will automatically open the valve. As the watering time is ended, the timer will automatically close the valve.

4. Revord your setup.

Make sure you have written your settings down for future checking.

Shut down the auto watering system

You may rotate the Run Time knob ⑤ to the "OFF" position so as to shut down the auto watering system, In this case,

the timer will memorize the setting value on automatic watering; however, the setting won't be executed.

NOTE: If you want to restore the auto watering, anytime rotate the Run Time knob ⑤ to the original location for automatic watering system.

Auto close switch for single watering

1. Rotate the Frequency control knob ④ to Now position. (If the original Frequency control knob is on Now position, you need to rotate the Frequency control knob to the other one & adjust back to Now position. This moving is to ensure the timer matches the current time.)
2. Rotate Run Time control knob ⑤ to the desired watering time.

When you have completely finished the above setup, the timer will start working. As the running time is over, the timer will automatically close the valve. Repeat the step 1 & 2 for next setup.

Manual operation

Anytime you may use manual watering system to execute watering.

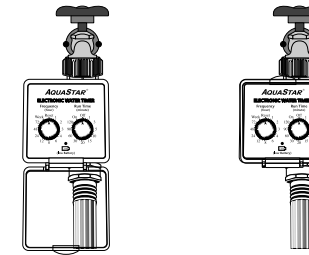
1. Rotate the Run Time control knob ⑤ to the "ON" position. The timer will open the valve for watering at once.
2. When you want to close the manual watering, just rotate the Run Time control knob ⑤ to the "OFF" position. The timer will close the valve & stop watering.



When you have finished the manual watering, you must rotate the Run Time control knob to the original setup position for running watering. In this case, the timer may be available for automatic watering system.

Installing the water timer

1. Make sure water faucet is turned off and that proper frequency and run time are programmed. Close the front cover securely.
2. Attach garden tap to top of unit and garden hose to bottom.
3. Turn on water faucet.



Care and Maintenance

1. Watering season

- When it is not used, keep the cover closed to protect the setting panel.
- The timer should not be used in damp pits.

2. During non-watering season (e.g. winter)

- Turn off the faucet.
- Remove the timer from the faucet.
- Rotate Rim Time control knob ⑤ to "ON" position so as to ooen the valve to drain out water.
- Remove the batteries. Dry the timer.
- Store the timer in a dry place.

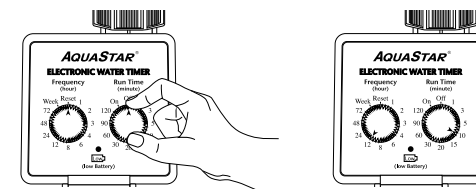


Do not keep the timer on the faucet or outdoors during cold weather. Temperatures under 32°F (0°C) may damage the timer.

Application examples for reference

Ex. 1

10 minutes watering everyday at 7:00AM & 7:00PM.



First day, set up the following either at 7:00AM or 7:00PM.

1. Rotate Frequency control knob ④ to the position of 12h (If the original Frequency control knob ④ is on the position of 12h, you need to rotate Frequency control knob ④ to the other one, and then adjust back to the position of "12h". This moving is to ensure the timer matches the current time.

2. Rotate Run Time control knob ⑤ to the position of 10 minutes. After 12 hours, the timer will automatically open the value for watering. 10 minutes later, the timer will automatically close the watering. This means at the same time 7:00AM & 7:00PM everday there are 10 minutes watering.

Ex. 2

15 minutes watering everyday at 7:00AM.

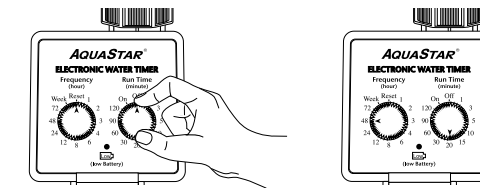


First day, set up the following at 7:00AM.

1. Rotate Frequency control knob ④ to the position of "24h". (If the original Frequency control knob ④ is on the position of 24h, you need to rotate Frequency control knob ④ to the other one, and then adjust back to the position of "24h". This moving is to ensure the timer matches the current time.
2. Rotate Run Time control knob ⑤ to the position of 15 minutes. 24 hours later. the timer will automatically open the value for watering. 15 minutes later, the timer will automatically close watering. This means at the same time 7:00AM everyday there are 15 minutes watering.

Ex. 3

Watering 20 minutes once every other day at 7:00AM.



First day, set up the following at 7:00AM.

1. Rotate Frequency control knob ④ to the position of "48h". (If the original frequency control knob ④ is on the position of 48h, you need to rotate Frequency control

knob to the other one, and then adjust back to the position of 48h. This moving is to ensure the timer matches the current time.

2. Rotate Run Time control knob ⑤ to the position of 20 minutes. After 48 hours, the timer will automatically open the valve for watering. 20 minutes later, the timer will automatically close watering. This means there are 20 minutes watering once every other day at 7:00AM.

Please check if the timer is not workable.

1. Does the faucet open?
2. Should the batteries be replaced?
3. Is Run Time control knob ⑤ on the position of "OFF"?
4. Check if the setting of Frequency control knob ④ & Run Time control knob ⑤ is normal?

While you have checked the above, if the timer is still not workable, consult with the store in which you bought the timer.

THANK YOU

Thank you for purchasing this newly designed water timer. With a full range of high quality watering tools, **AQUASTAR®** will satisfy all your watering needs.

AQUASTAR®

For additional information contact us at www.aquastarym.com